

CAMBERWELL LEISURE CENTRE

APPENDIX C

NOTES

- All dimensions are in metres unless otherwise stated.
- This drawing is to be read in conjunction with all Conway - AECOM drawings for job ref. C0290 as listed on the scheme document issue sheet.
- Traffic management is to be in accordance with Chapter 8 of the Traffic Signs Manual and Safety at Street Works and Road Works A Code of Practice.
- Any works around or in the vicinity of trees, contractor shall ensure that the trees are sufficiently protected by maintaining at least one metre barrier protection from the tree trunk, that no materials or plant are stored/used within the canopy of the tree and that all works are undertaken by hand digging. If any tree roots in excess of 25mm are encountered on site, the contractor shall cease works in that area and seek guidance from the site engineer who will consult Southwark council Arboricultural Officer.
- Contractor to scan for shallow services prior to excavation and refer to utility information.
- Contractor to maintain access to all properties and businesses at all times.
- All footways to be laid maintaining a crossfall of approximately 1:40 unless otherwise stated. Refer to Drawing No. 60493383-C0290-CS-01 to 02 for further information.
- Tactile paving to be laid with a maximum gradient of 1:12.
- This drawing is to be read in conjunction with Southwark Streetscape Design Manual (SSDM) and all relevant contract clauses.
- Design at the crossover areas is only indicative. Refer to standard details for further design specifications.
- All covers at traffic carpets are to be straightened. Irregular shaped covers/frames should be replaced with rectangular. If this is not possible, regularise with a 100mm wide air entrained concrete surround.

LEGEND / NOTES.

KEY

- SITE EXTENTS.
- UNBOUND FOOTWAY CONSTRUCTION (PRECAST CONCRETE PAVING). REFER TO STANDARD DETAIL C FOR FURTHER INFORMATION.
- BOUND FOOTWAY CONSTRUCTION (PRECAST CONCRETE PAVING). REFER TO STANDARD DETAIL D FOR FURTHER INFORMATION.
- CROSSOVER CONSTRUCTION. REFER TO STANDARD DETAIL H FOR FURTHER INFORMATION.
- TRAFFIC CARPET PLATEAU (UNBOUND ANTI-SHIFT FOOTWAY) AND RAMP CONSTRUCTION. REFER TO STANDARD DETAIL A FOR FURTHER INFORMATION.
- BOUND FOOTWAY CONSTRUCTION IN GRANITE BLOCKS FOR BIN STORAGE AREA. REFER TO STANDARD DETAIL E.
- CARRIAGEWAY RESURFACING. REFER TO STANDARD DETAIL F FOR FURTHER INFORMATION.
- YORKSTONE RAMP AND STAIRS UNBOUND CONSTRUCTION REFER TO STANDARD DETAIL G.
- EXISTING WALL TO BE RETAINED.
- PROVIDE AND INSTALL NEW BOUNDARY WALL AND RAILING FOR CAR PARK.
- EXISTING CELLARS / BASEMENTS BELOW FOOTWAY.
- BLISTER TACTILE PAVING CONSTRUCTION. REFER TO STANDARD DETAIL B FOR FURTHER INFORMATION.
- NEW STANDARD GRANITE KERBS [TYPE: K15-T1(N/S)] LAID WITH 100MM UPSTAND ON ST4 CONCRETE. TO BE INSTALLED ON A M1 FOUNDATION AS VOLUME 2, ANNEX D, DRAWING LBS/C/010.
- NEW STANDARD GRANITE FLUSH KERBS [TYPE: K15-T1(L/S)] LAID FLUSH ON ST4 CONCRETE. TO BE INSTALLED ON A TYPE P FOUNDATION AS VOLUME 2, ANNEX D, DRAWING LBS/C/010.
- NEW STANDARD GRANITE KERBS [TYPE: K15-T1(N/S)] LAID WITH 150MM UPSTAND ON ST4 CONCRETE. TO BE INSTALLED ON A M1 FOUNDATION AS VOLUME 2, ANNEX D, DRAWING LBS/C/010.
- NEW STANDARD GRANITE SPLAY QUADRANT [TYPE: KQ30-(N/X15)] LAID WITH 150MM UPSTAND ON ST4 CONCRETE. TO BE INSTALLED ON A M1 FOUNDATION AS VOLUME 2, ANNEX D, DRAWING LBS/C/010.
- NEW STANDARD GRANITE 90 DEGREE ANGLE KERB [TYPE: KA-150(90/N)] LAID WITH 150MM UPSTAND ON ST4 CONCRETE. TO BE INSTALLED ON A M1 FOUNDATION AS VOLUME 2, ANNEX D, DRAWING LBS/C/010.
- FOOTWAY DRAINAGE CHANNEL FORMED BY TWO BLOCKS OF DARK GREY ANTI-SHIFTS. (300mm X 150mm X 100mm).
- FOOTWAY DRAINAGE CHANNEL FORMED BY TWO BLOCKS OF SILVER GREY ANTI-SHIFTS. (300mm X 150mm X 100mm).
- NEW STANDARD GRANITE EDGING KERB [TYPE: E-NS(150)] LAID FLUSH ON ST4 CONCRETE. TO BE INSTALLED ON A TYPE Q1 FOUNDATION AS VOLUME 2, ANNEX D, DRAWING LBS/C/010.
- NEW KERBS FOR CROSSOVER CONSTRUCTION. REFER TO STANDARD DETAIL H FOR FURTHER INFORMATION.
- PROPOSED CYCLE STAND. REFER TO STANDARD DETAIL I.

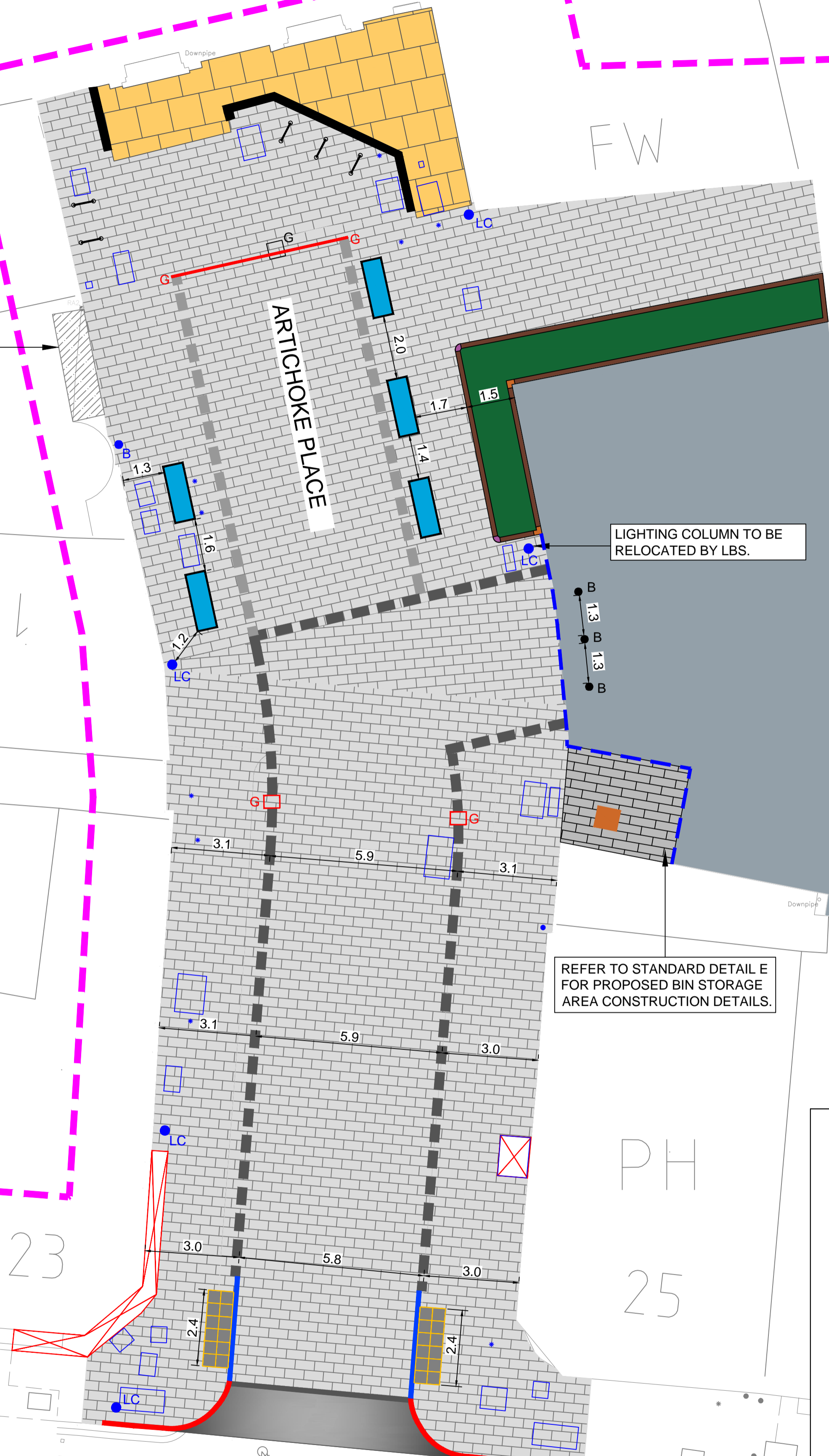
ACCOMMODATION WORKS TO BE EXTENDED UP TO 1m INTO ARTICHOKE MEWS.

ARTICHOKE MEWS (OFF HIGHWAY)

F:\PROJECTS\TRAFFIC - SOUTHWARK HAPS 2014\1506 - LOT C PROFESSIONAL SERVICES\PROJECTS\C0290 CAMBERWELL POCKET PLACES DD_2100 CAD\0493383-C0290-DD-1100.DWG

CAMBERWELL CHURCH STREET

THE PRINCIPAL CONTRACTOR TO TAKE EXTRA CARE WHEN EXCAVATING NEAR EXISTING CELLARS / BASEMENTS ON NO. 25 CAMBERWELL CHURCH STREET. THERE IS NO CONFIRMATION THE BASEMENTS ON NO. 21, 23 CAMBERWELL CHURCH STREET EXTEND UNDER THE FOOTWAY.



LIGHTING COLUMN TO BE RELOCATED BY LBS.

REFER TO STANDARD DETAIL E FOR PROPOSED BIN STORAGE AREA CONSTRUCTION DETAILS.

REFER TO STANDARD DETAIL H AND SSDM STANDARD DRAWINGS LBS/G/010 FOR TYPE 4 CROSSOVER CONSTRUCTION DETAILS.

KEY (continued)

- EXISTING UTILITY COVERS TO BE RESET TO NEW FOOTWAY / CARRIAGEWAY LEVELS. ALL FOOTWAY COVERS TO BE CONVERTED INTO RECESSED COVERS EXCEPT AT VEHICLE CROSSOVERS. SEE NOTE 11 FOR COVERS AT TRAFFIC CARPETS.
- EXISTING VENTILATION GRILLS.
- NEW LOCATION OF SALT BIN.
- REDUNDANT GULLY POT.
- PROPOSED FOOTWAY LINEAR GULLY.
- PROPOSED DREXUS SLOT DRAIN BY MARSHALLS OR SIMILAR APPROVED.
- EXISTING LAMP COLUMN.
- NEW LAMP COLUMN. EXACT LOCATION TO BE CONFIRMED FOLLOWING LIGHTING ASSESSMENT BY LBS.
- NEW LANDSCAPE AREA. REFER TO STANDARD DETAIL J FOR FURTHER INFORMATION.
- NATURAL STONE SEATING. MILD GREY. FLAMED FINISH. (1800X600X450MM)
- NEW FERROCAST MANCHESTER POLYURETHANE BOLLARD WITH ROOT AND SOCKET BY MARSHALLS OR SIMILAR APPROVED. TO BE INSTALLED ON A F FOUNDATION AS VOLUME 2, ANNEX D, DRAWING LBS/C/030.
- EXISTING BOLLARD.

DRAFT

NOT FOR CONSTRUCTION

REV	DATE	REVISION DESCRIPTION / DETAILS	DRN BY	CHKD BY	APRVD BY
A	10-01-17	CHANGES FOLLOWING DQW	AE	-	-



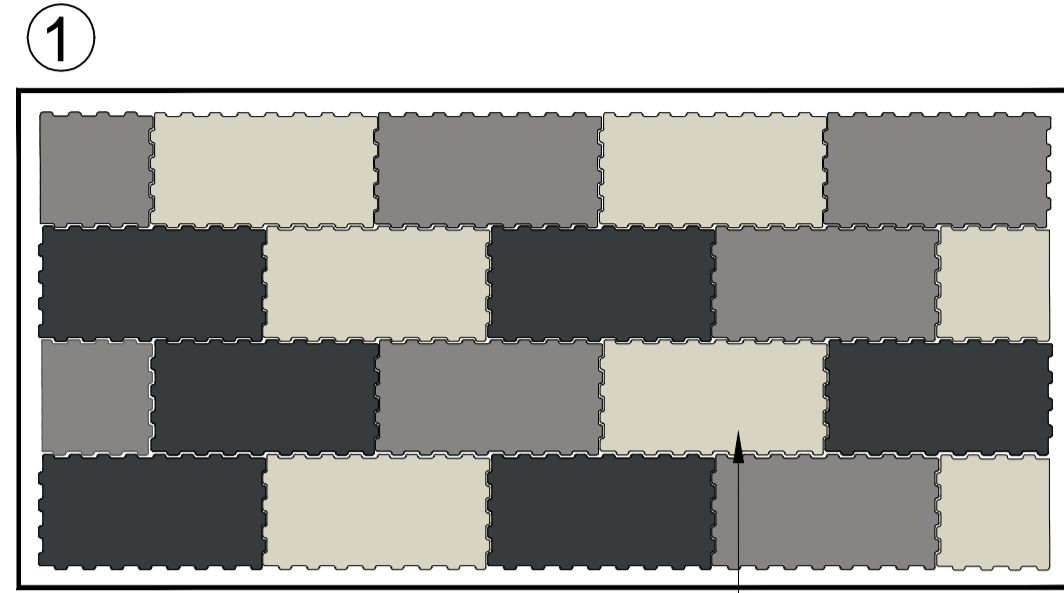
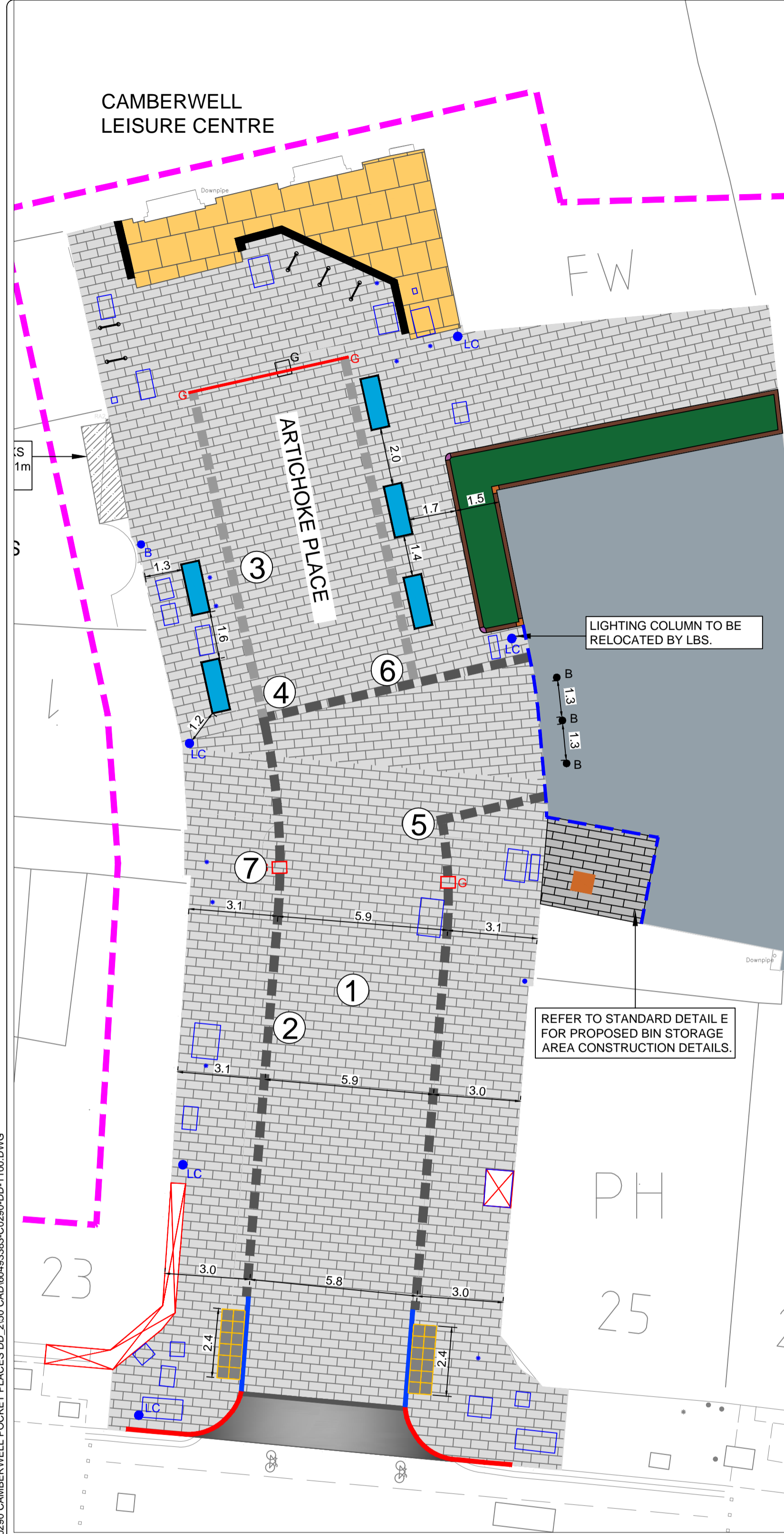
PROJECT: CAMBERWELL POCKET PLACES DETAILED DESIGN

TITLE: SERIES 1100 KERBS & PAVED AREAS ARTICHOKE PLACE

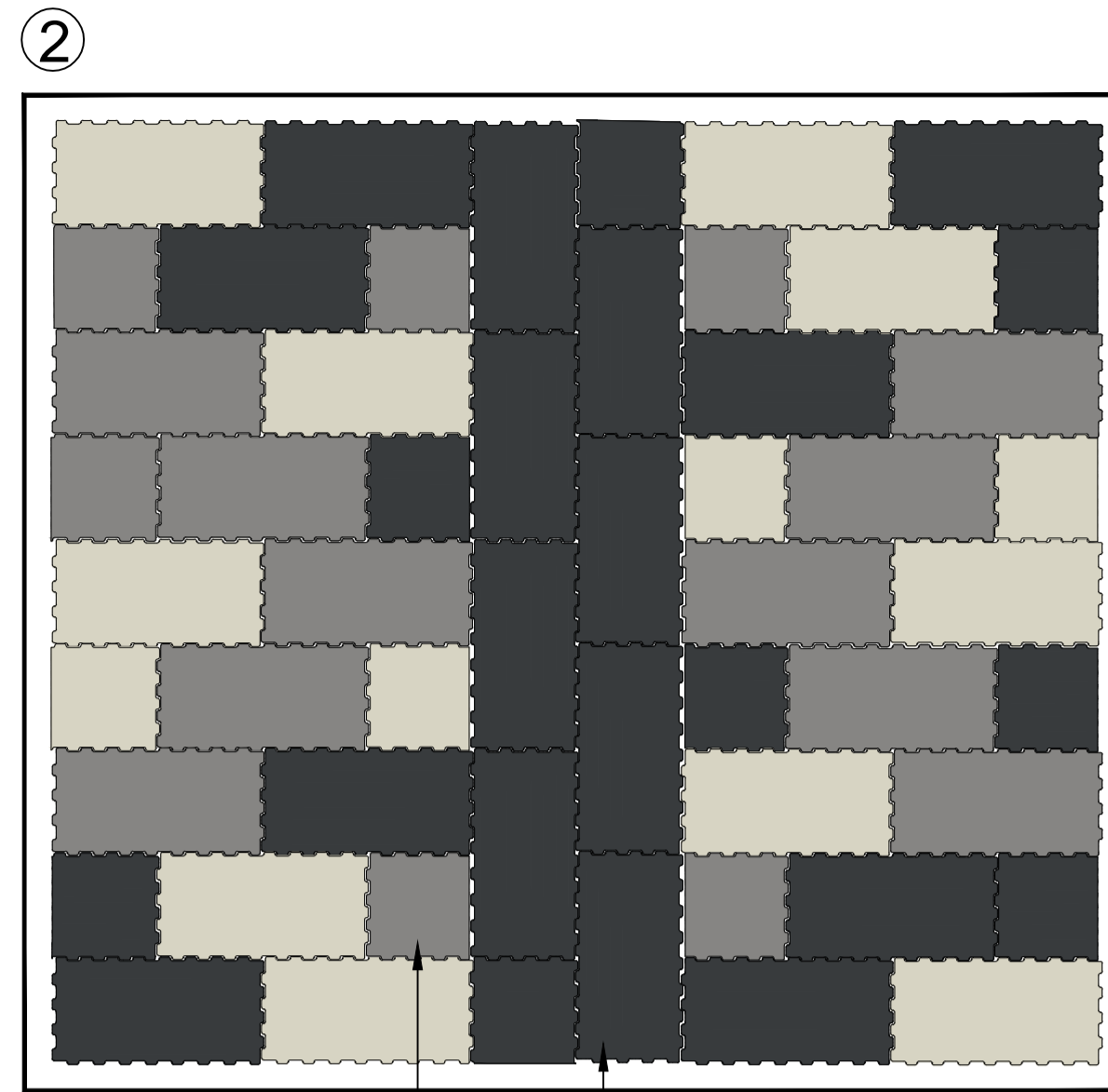
CONTRACT NO: 60493383-C0920 DRAWN: AE DESIGNED: HP

SCALE: 1 : 100 @A1 PURPOSE: FOR COMMENT CHECKED: ABE APPROVED: AGB

DRAWING NO: 60493383-C0920-S1100-01 REV: A DATE DRAWN: SEPTEMBER 2016 DATE ISSUED: 14 OCTOBER 2016

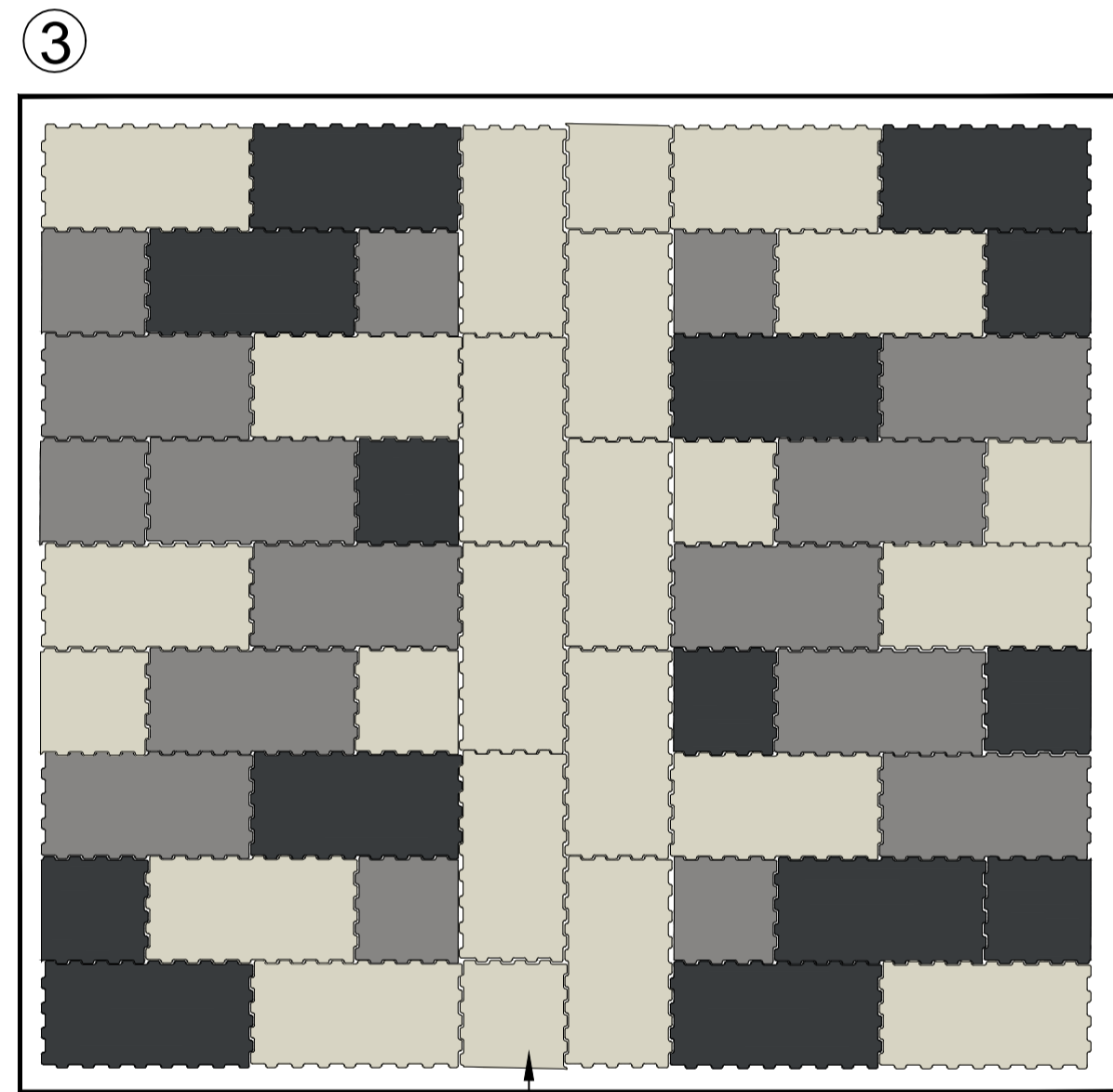


ANTI-SHIFT BLOCKS TO BE LAID IN A RANDOMLY DISTRIBUTED MIX OF 60% SILVER GREY, 20% MID GREY AND 20% DARK GREY. TO BE JOINTED WITH J-SS1 AND J-X1 AS PER DETAIL A.

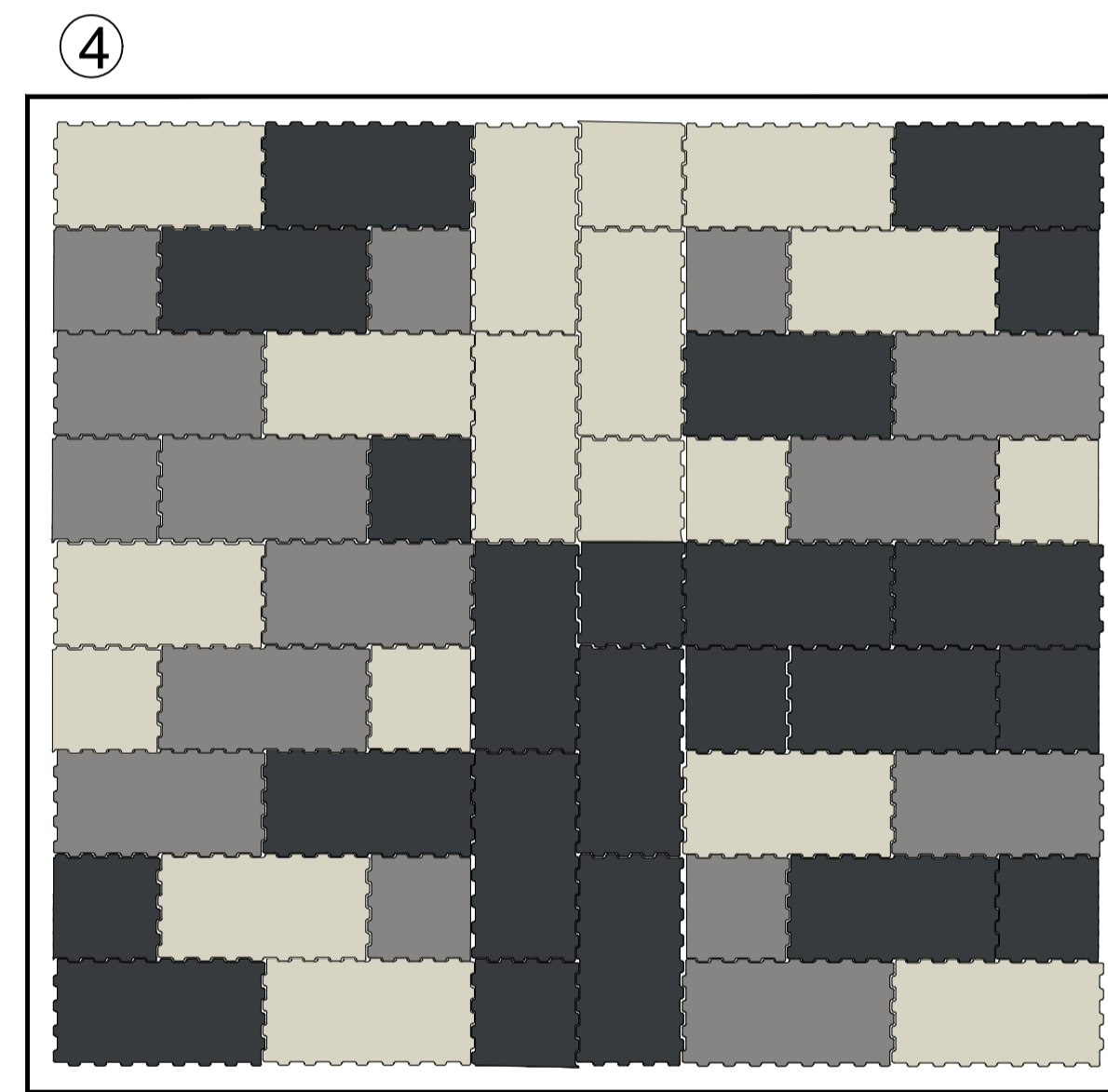


HALF ANTI-SHIFT BLOCK TO BE INSTALLED EVERY OTHER BLOCK. IF HALF BLOCKS ARE NOT PROVIDED BY THE MANUFACTURER, FULL SIZE BLOCKS ARE TO BE CUT ONSITE. TO BE JOINTED WITH J-SS1 AND J-X1 AS PER DETAIL E.

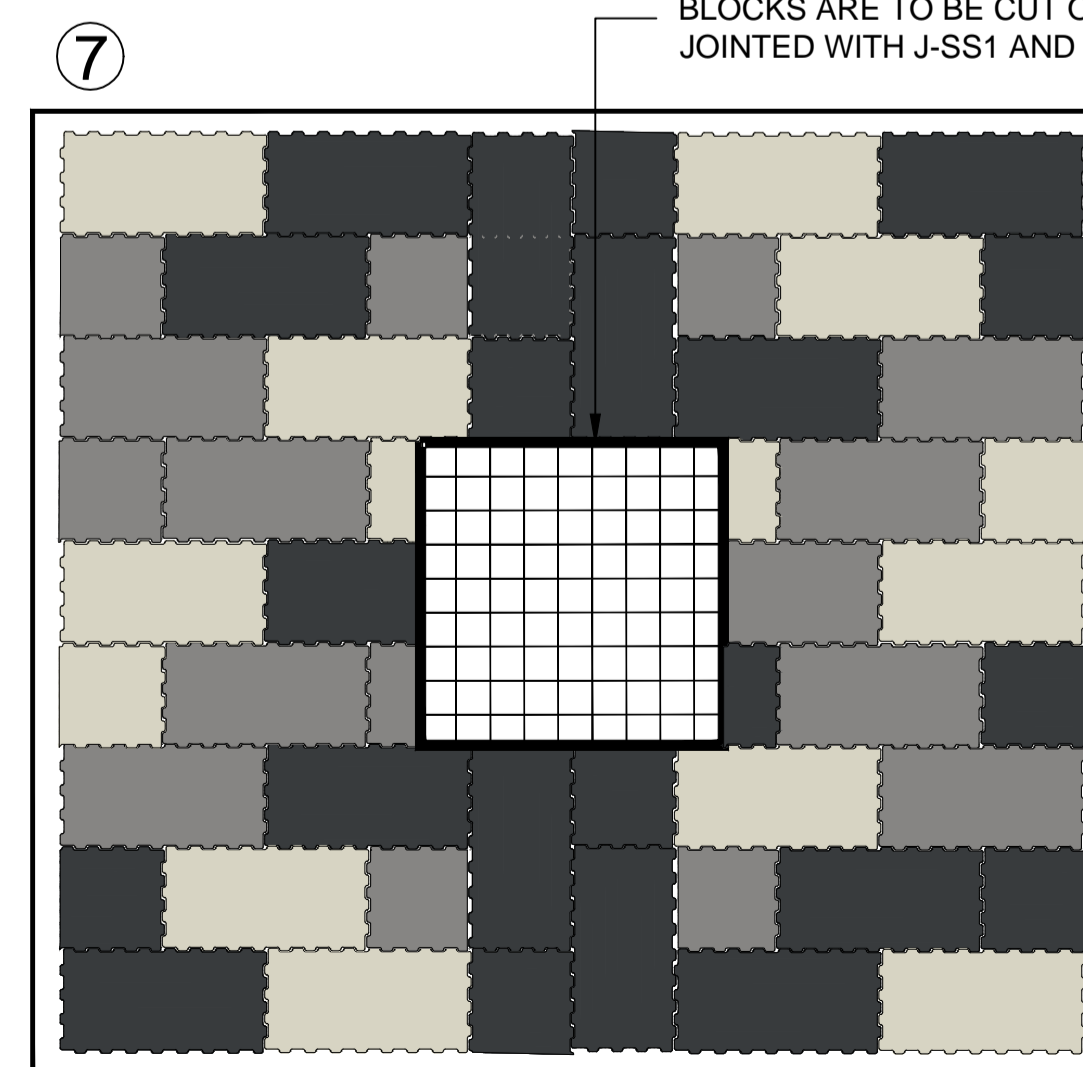
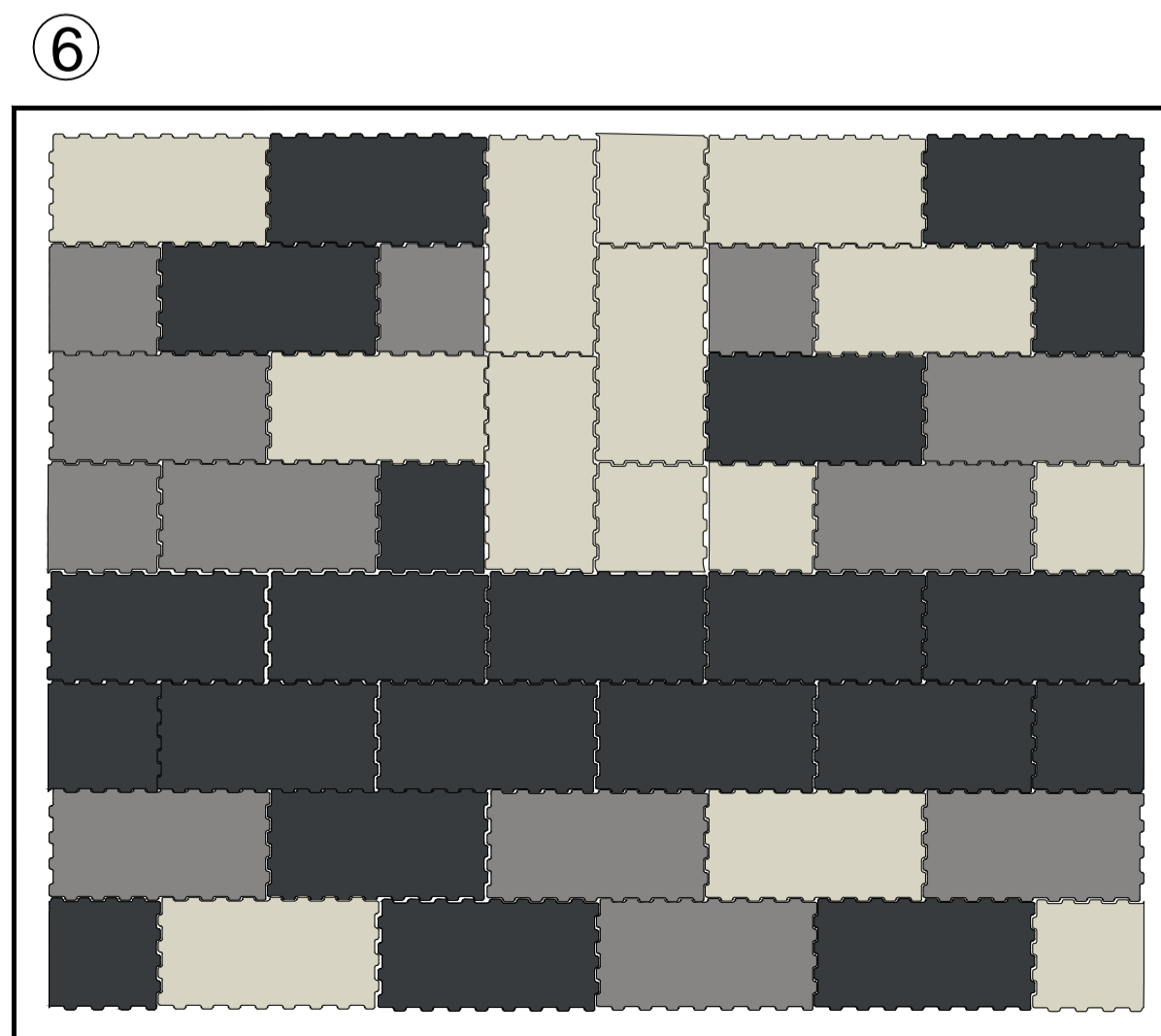
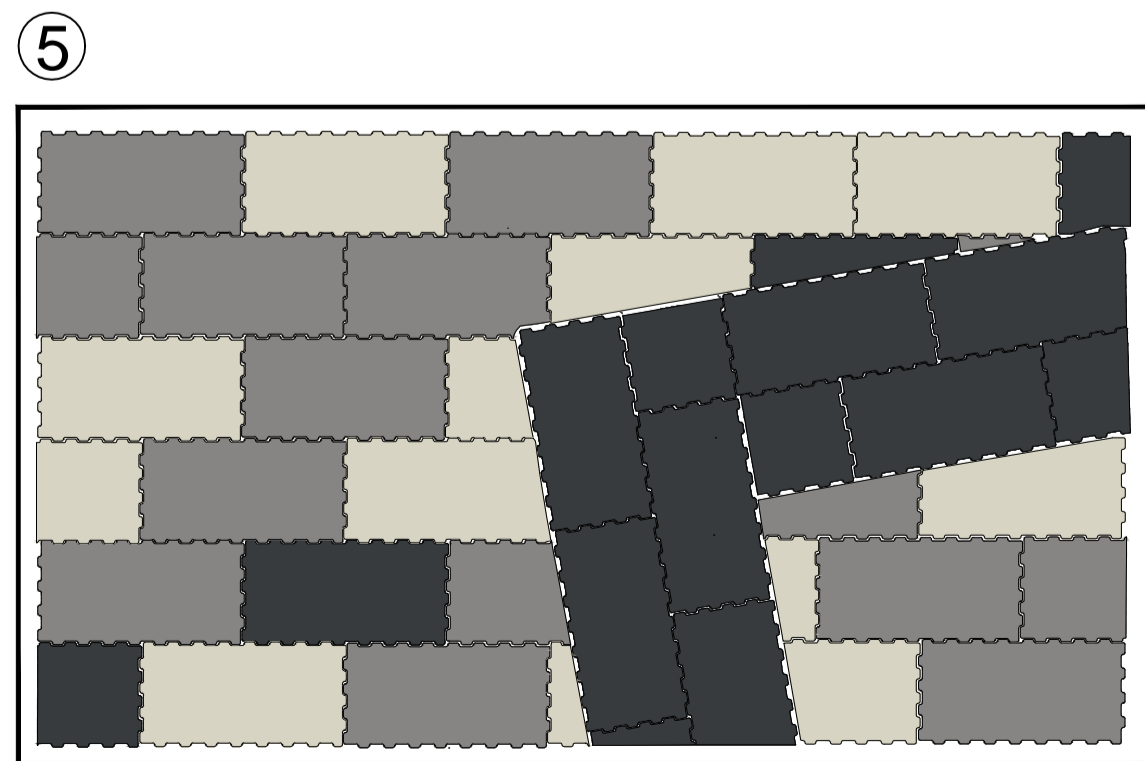
TWO LINES OF DARK GREY ANTI-SHIFT BLOCKS TO BE INSTALLED AS FOOTWAY CHANNEL AND VEHICLES AREA BOUNDARY. TO BE JOINTED WITH J-SS1 AND J-X1 AS PER DETAIL E.



TWO LINES OF SILVER GREY ANTI-SHIFT BLOCKS TO BE INSTALLED AS FOOTWAY CHANNEL AND VEHICLES AREA BOUNDARY. TO BE JOINTED WITH J-SS1 AND J-X1 AS PER DETAIL E.



IRREGULAR ANTI-SHIFT BLOCKS TO BE INSTALLED AROUND THE GULLY. FULL SIZE BLOCKS ARE TO BE CUT ONSITE. TO BE JOINTED WITH J-SS1 AND J-X1 AS PER DETAIL E.



KEY

DRAFT

NOT FOR CONSTRUCTION

REV	DATE	REVISION DESCRIPTION / DETAILS	DRN BY	CHKD BY	APRVD BY



PROJECT: CAMBERWELL POCKET PLACES DETAILED DESIGN					
TITLE: SERIES 1100 KERBS & PAVED AREAS ARTICHOKE PLACE					
CONTRACT NO:	60493383-C0920	DRAWN	AE	DESIGNED	HP
SCALE:	1 : 100 @A1	PURPOSE:	FOR COMMENT	CHECKED	ABE
DRAWING NO:	60493383-C0920-S1100-01	APPROVED	AGB	REV:	A
DATE DRAWN:	DECEMBER 2016	DATE ISSUED:			